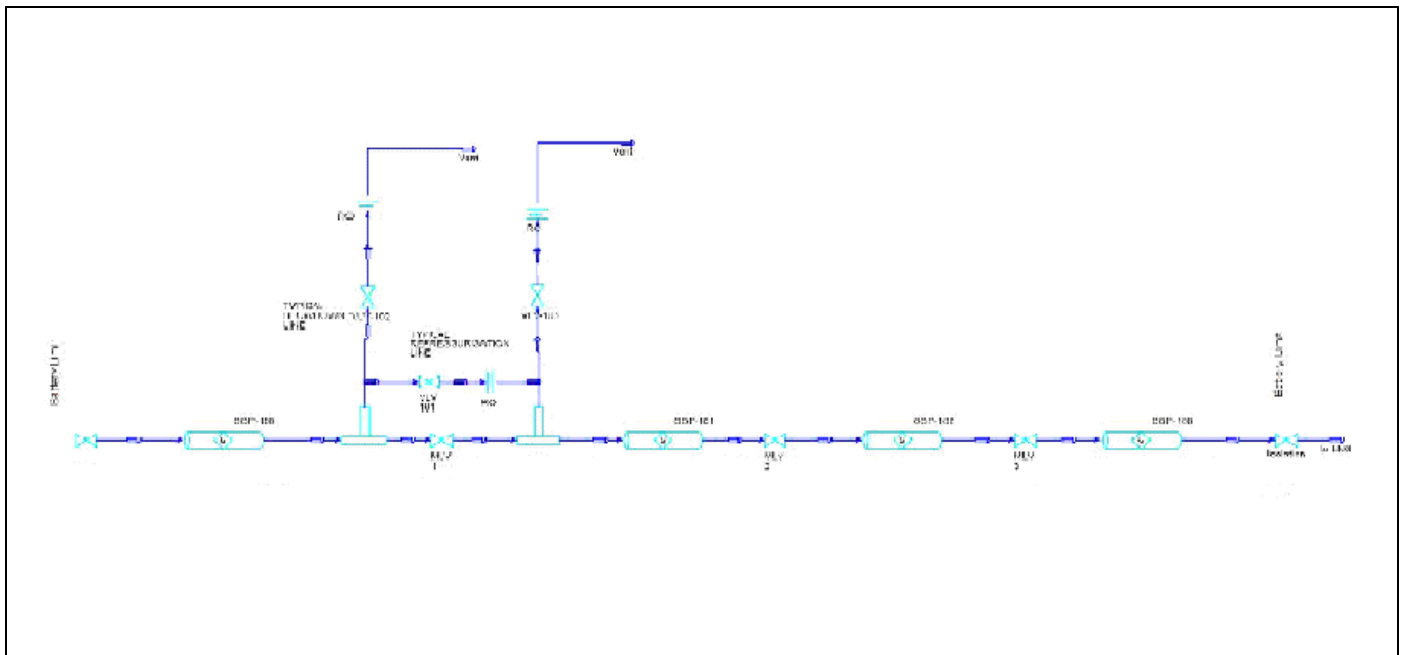


Depressurization and Repressurisation –LNG Gas Pipeline

The project involves Preparation of Depressurization and Repressurisation Study reports for onshore LNG Gas Pipeline to transport LNG feed gas to a LNG plant. The rigorous analysis had been carried out to verify Depressurization and Repressurisation flow rates through selected Blowdown Valves.

UniSim Design (Process Simulator) Dynamic Utility was used for this study.

Flow Sheet:



Based on pressure and temperature profiles considering intrinsic gas thermodynamics as well as external factors involved during the process, we recommended the optimal size of orifice to stay above pipeline limiting conditions. The variation in noise level during Depressurization was also incorporated in the study.